

MEETING & CONVENTION



Lexis Suites Penang presents an impressive range of meeting spaces and facilities, suitable for business events or social gatherings. Our professional team of banquet personnel are on hand to ensure flawless execution and seamless service, ensuring a successful event every time.

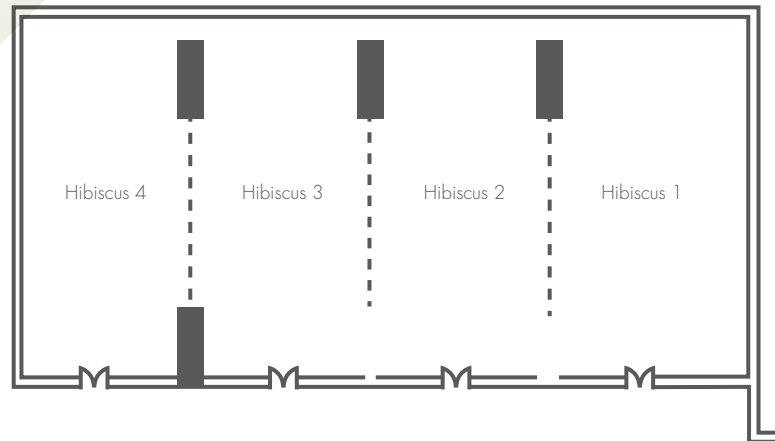
The Hibiscus Grand Ballroom measures 5,960 sq ft (554 sqm) and is able to accommodate up to 600 persons theatre style. Equipped with state-of-the-art audio visual facilities, the ballroom can be partitioned into four separate rooms.

Meanwhile smaller scale meetings are adequately catered for, with another four function rooms of varying sizes. Additionally, there is also a VIP holding room for important guests and dignitaries.

The Sky Terrace, located at level 24, is an ideal alternative for medium-scale alfresco banquet and social gatherings that offers an awesome view of its surroundings.

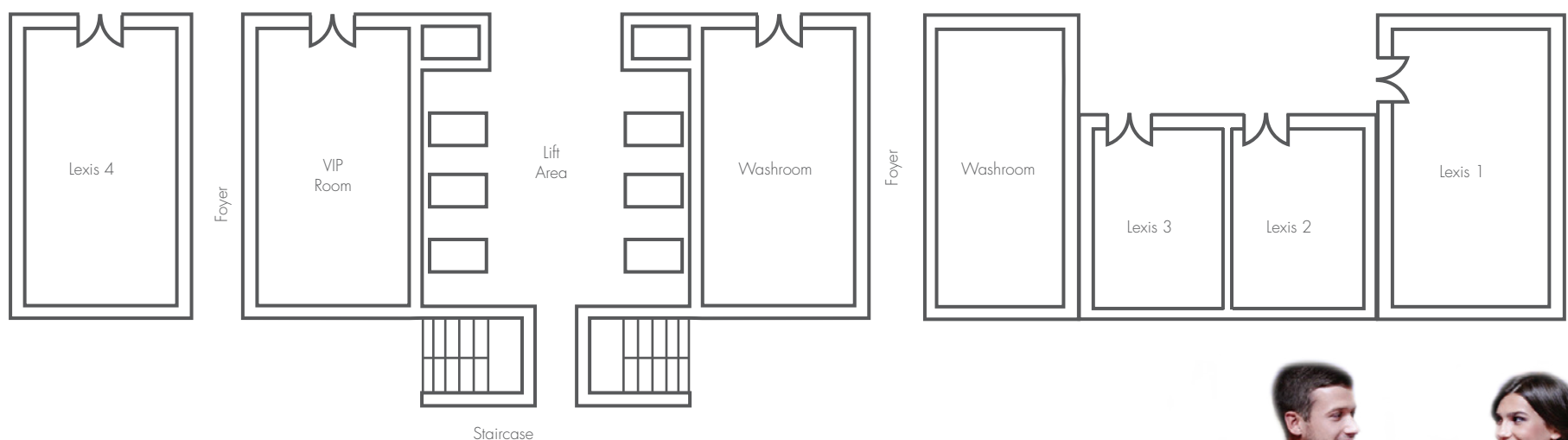
Function Room Dimension and Seating Capacity

Venue First Floor	Banquet Reception	Theatre	Classroom	U-Shape	Hollow Square	Boardroom	Dimension (m)	Area (sq m)	Ceiling (m)
Hibiscus Ballroom	380	600	252	*	*	*	42 x 13.18	554	6
Hibiscus 1	90	192	72	30	36	25	11 X 13.18	145	6
Hibiscus 2	90	120	54	30	36	25	8.5 X 13.18	112	6
Hibiscus 3	110	180	72	33	42	25	11 X 13.18	145	6
Hibiscus 4	90	120	54	30	36	25	8.2 X 13.18	108	6
VIP Room	*	*	*	*	*	*	3.04 X 8.79	26	4
LEXIS 1	40	50	27	21	24	19	6 X 11.79	70	4
LEXIS 2	30	40	18	15	18	13	5.79 X 7.79	45	4
LEXIS 3	30	40	18	15	18	13	5.5 X 7.79	42	4
LEXIS 4	20	20	12	9	12	7	4 X 7.29	29	4



Meeting and conferencing facilities:

- Complimentary wired and wireless broadband Internet access
- Satellite and teleconferencing
- Simultaneous translation system
- Microphones (wired, lapel, wireless)
- Portable and motorized screens
- High resolution LCD and direct projectors
- VHS multi-system and DVDs



Function Room Layout

